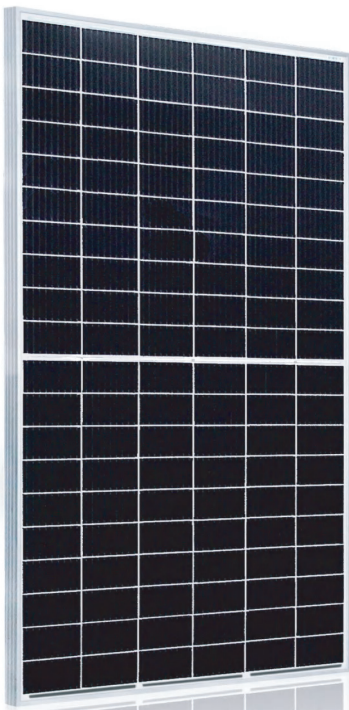


HT60-166M

Big Size: Cell 166*83

360W / 365W
370W / 375W / 380W



- Module Efficiency: 20.3%
- No. of Cells: 120 (6 × 20)
- Weight: 20.5kg
- Dimensions: 1775mm×1052mm×35mm

T [] [& " • ²³]ª ^

Established to develop solar technology for Satellite program



Shanghai Aerospace Automobile Electromechanical Co., Ltd.
Website : www.ht-saae.com.au
Address: 222 Caoxi Rd, the 8th Floor of Spaceflight

Made in China



Half cut cell technology can reduce the internal power loss and improve component overall power. Excellent heat dissipation avoids hot spot production.



9BB The optimized number and width of main gate lines, Maximize the light receiving area of components and Reduce component power consumption

25Ys
Products Warranty



Designed for high voltage systems of up to 1500 VDC, increasing the string length of solar systems and saving on BoS costs

25Ys
Warranty on power output



EL
Microcrack resistant enhance reliability, triple EL tested of high quality control.

All the modules are sorted and packaged by amperage, reducing mismatch losses and maximizing system output.



Entire module certified to with stand extreme wind (2400 Pa) and snow loads (5400 Pa)

PID

PID Resistant Optional

Comprehensive and first-rate certification system

International standards and certifications for solar modules, ensuring high performance and reliability.



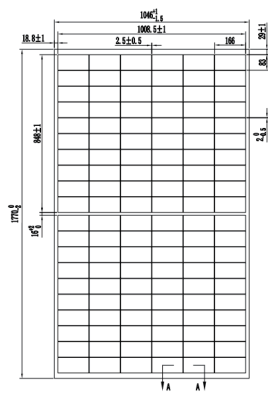
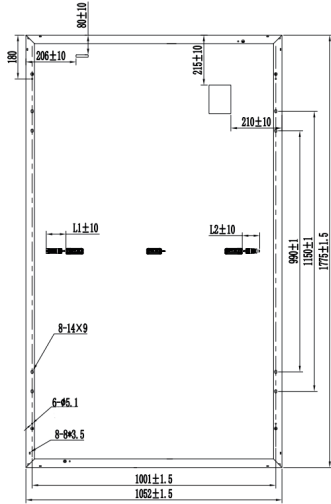
CEC Listed



Bloomberg TIER 1

360W/365W/370W/375W/380W

Engineering Drawing



Electrical Characteristics

Module	HT60-166M				
Maximum Power at STC(Pmax)	360	365	370	375	380
Open-Circuit Voltage(Voc)	41.1	41.3	41.5	41.6	41.7
Short-Circuit Current(Isc)	11.53	11.63	11.72	11.85	11.98
Optimum Operating Voltage (Vmp)	33.7	33.9	34.1	34.2	34.3
Optimum Operating Current(Imp)	10.69	10.77	10.86	10.98	11.09
Module Efficiency	19.3%	19.5%	19.8%	20.1%	20.3%
Tolerance	Pmax ±3% Voc ±5% Isc ±5%				
Maximum System Voltage	1500V DC(IEC)				
Maximum Series Fuse Rating	20A				
Operating Temperature	-40 °C to + 85 °C				
Fire Class	Class C				

*STC: Irradiance 1000W/m², module temperature 25, AM=1.5
Optional black frame or white frame module according to customer requirements

NMOT

Module	HT60-166M				
Maximum Power	267	270	274	278	281
Open Circuit Voltage (Voc)	38.8	39.0	39.2	39.3	39.4
Short Circuit Current (Isc)	9.31	9.39	9.46	9.57	9.67
Maximum Power Voltage (Vmp)	31.8	32.0	32.2	32.3	32.4
Maximum Circuit Current (Imp)	8.40	8.44	8.51	8.61	8.67
NOCT	45°C ±2°C				

*NMOT: Irradiance 800W/m², ambient temperature 20°C, wind speed 1 m/s

Mechanical Characteristics

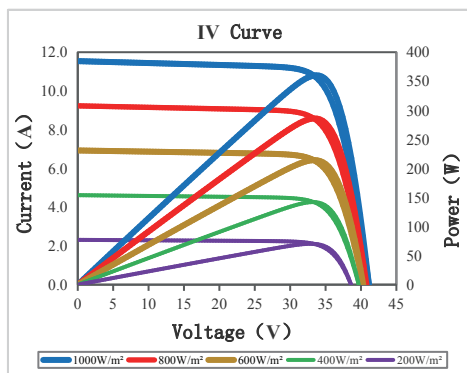
Solar Cells	Monocrystalline 166 × 83 mm
No. of Cells	120 (6 × 20)
Dimensions	1775mm×1052mm×35mm
Weight	20.5 kg
Front Glass	High transmission tempered glass
Frame	Anodized aluminium alloy
Junction Box	IP68
Cable	4mm ² (IEC) Length: (+)200mm,(-)300mm
Connectors	PV-CO02 (UKTR)
Packaging Configuration	31pcs / box, 806pcs / 40'HQ Container

Temperature Characteristics

Temperature Coefficient of Pmax	γ (Pm)	-0.39%/K
Temperature Coefficient of Voc	β (Voc)	-0.29%/K
Temperature Coefficient of Isc	α (Isc)	0.049%/K

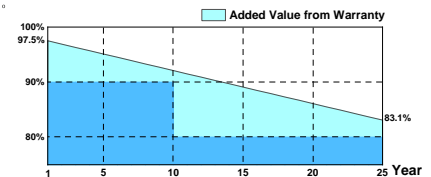
I-V Curves

Current-Voltage & Power-Voltage Curve



Warranty

25-year product warranty
25-year warranty on power output
Specific information is referred to the product quality guarantee



Information Box